



MAHARASHTRA EDUCATION SOCIETY'S  
(SINCE 1860)

# MES COLLEGE OF NURSING

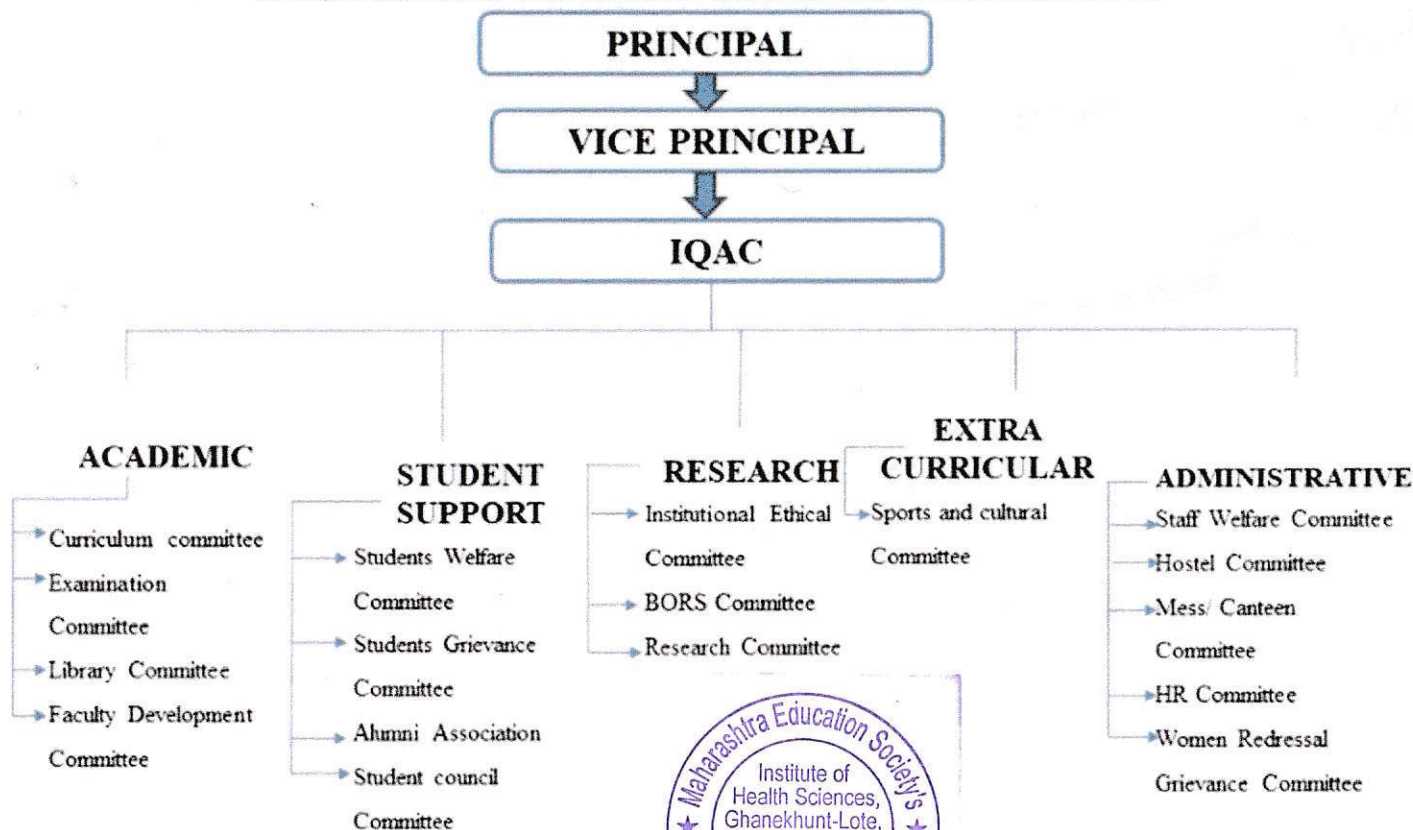
Institute of Health Sciences, Ghanekhunt-Lote, Tal. Khed, Dist. Ratnagiri-415722.

Tel. : Ph. No. 02356-661577. Email: [mesnursing@mespune.in](mailto:mesnursing@mespune.in) & [www.nursingcollege.mespune.in](http://www.nursingcollege.mespune.in)

Recognized by: Indian Nursing council, New Delhi; Maharashtra Nursing council, Mumbai & Govt. of Maharashtra

Affiliated to : Maharashtra University of health sciences, Nashik.

## ORGANIZATIONAL CHART



Head Office: 'MES Bhavan', 1214-1215, Sadashiv Peth, Pune-411 007, Maharashtra, India. Ph.: +91-020-41038100. [www.mespune.in](http://www.mespune.in)

Principal  
Maharashtra Education Society's  
**MES COLLEGE OF NURSING**  
Institute of Health Sciences,  
Ghanekunt-Lote, Tal. Khed, Dist, Ratnagiri - 415722