

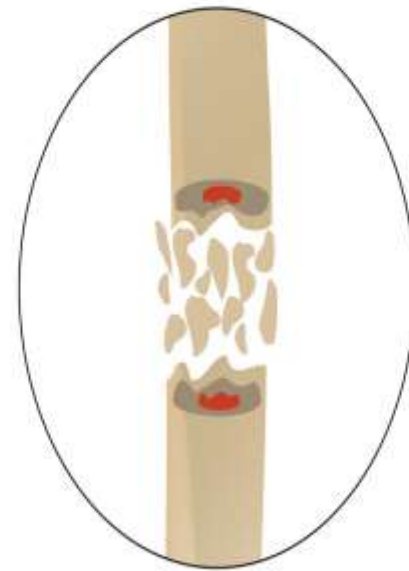
- A Fracture is the partial or complete breakage of bone

# Fracture

---

- Comminuted:
- If broken in several places

## ***Comminuted fracture***



VectorStock®

VectorStock.com/23823798

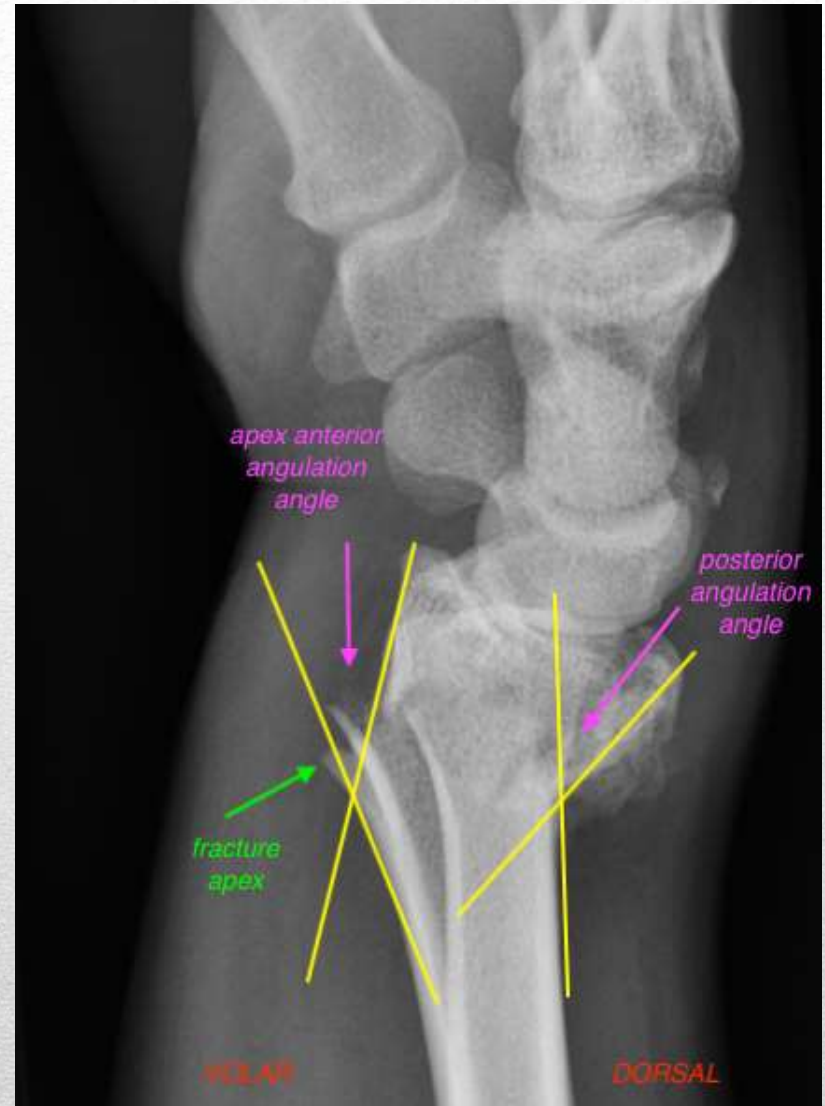
---

# **Classification of Fracture**

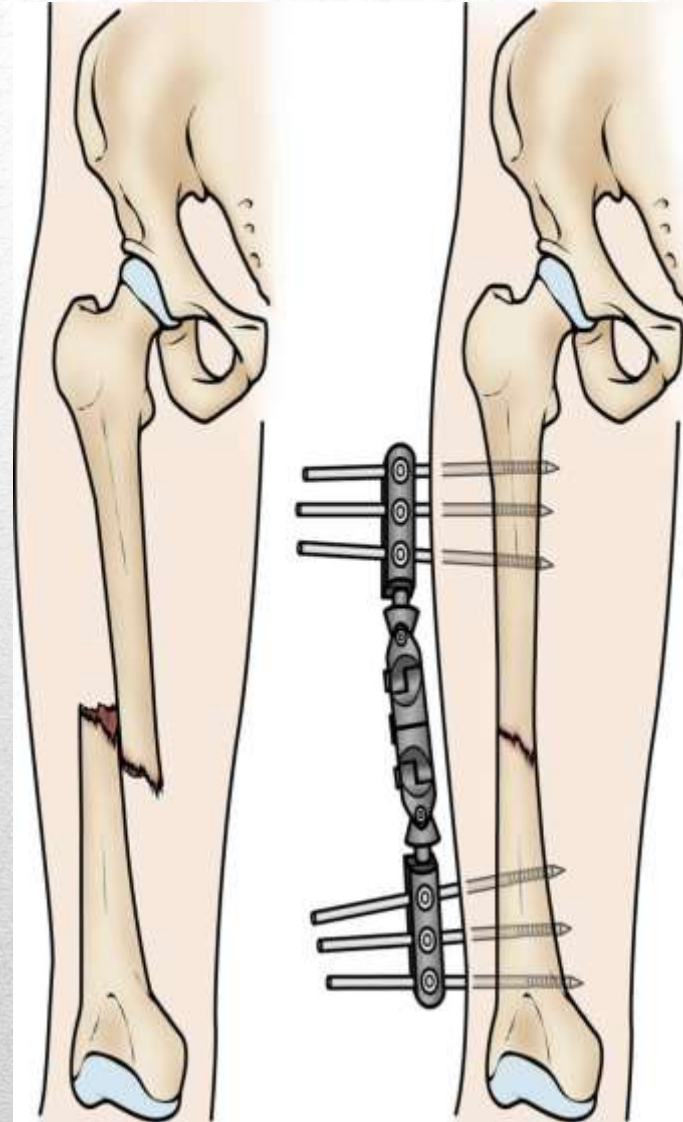
- Green Stick:
- If the break is incomplete



- Angulated:
- If broken bone is bent at an angle



- Transverse
- Fracture pattern is a straight line that runs in the opposite direction of bone.



- Longitudinal
  - Longitudinal fractures are **fractures that occur along (or nearly along) the axis of the bone**
-

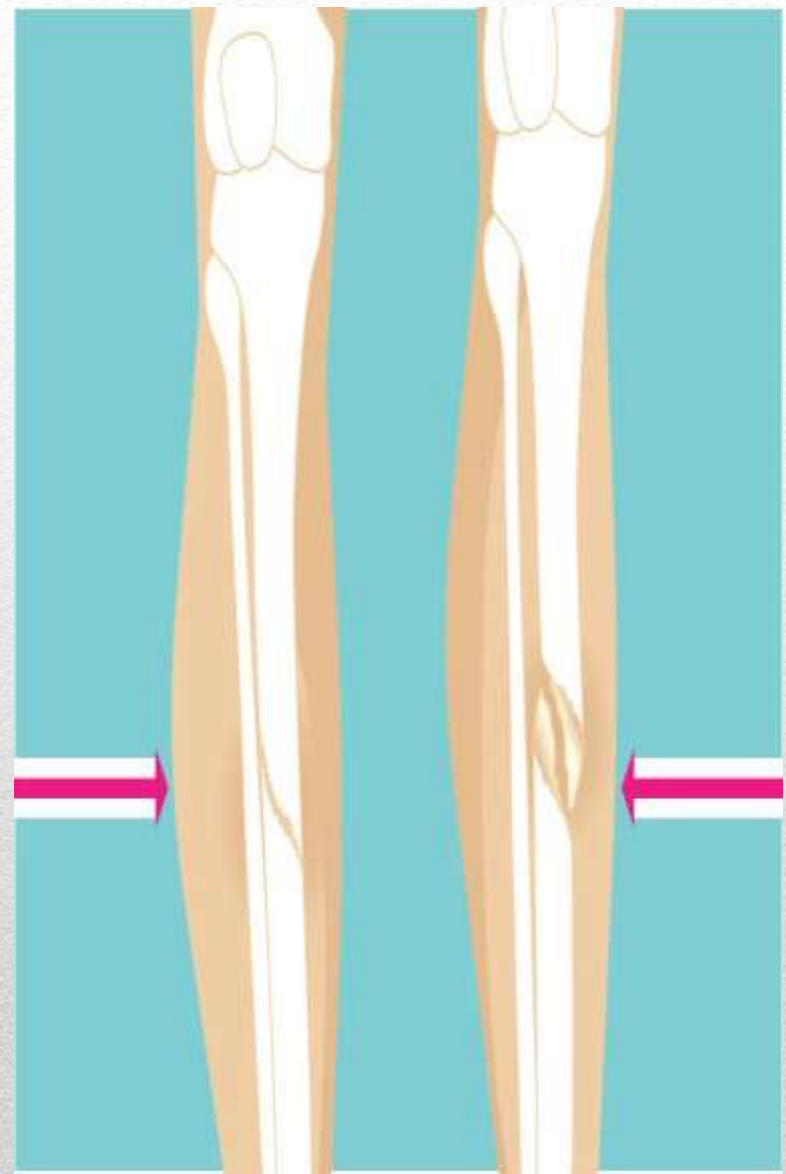
- Oblique:
- Oblique fractures **occur when your bone is broken at an angle**

## ***Oblique fracture*** *(with offset)*





- Spiral
- They happen when one of your bones is broken with a twisting motion

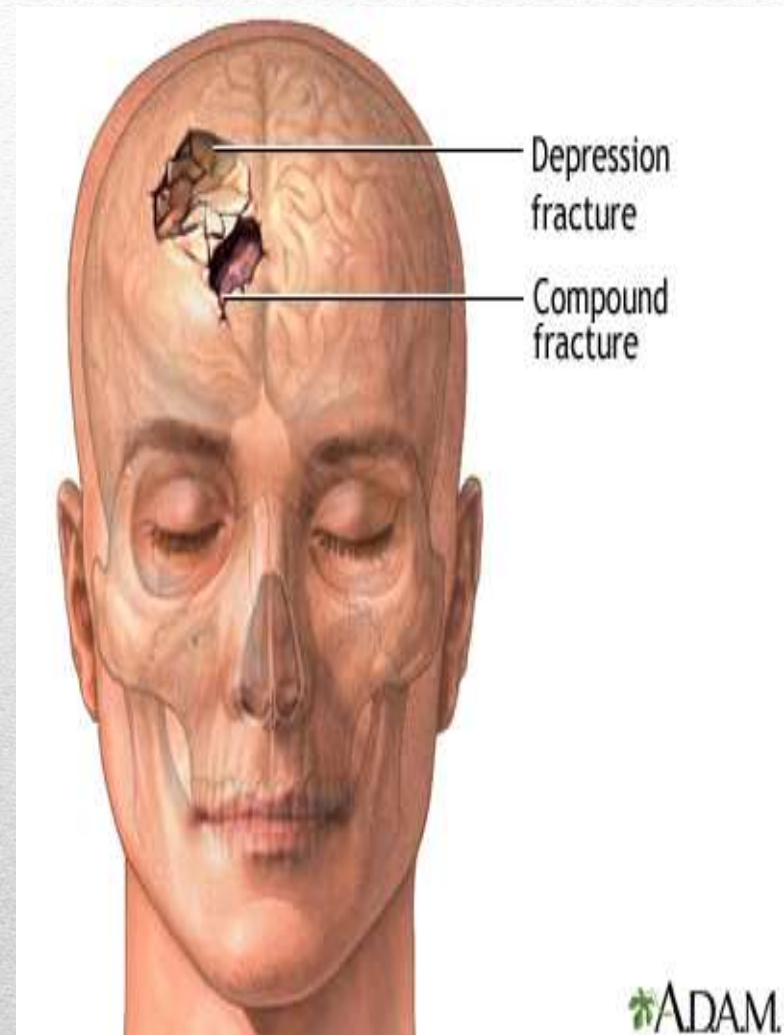


- Impacted
- An impacted fracture **occurs when the broken ends of the bone are jammed together by the force of the injury**

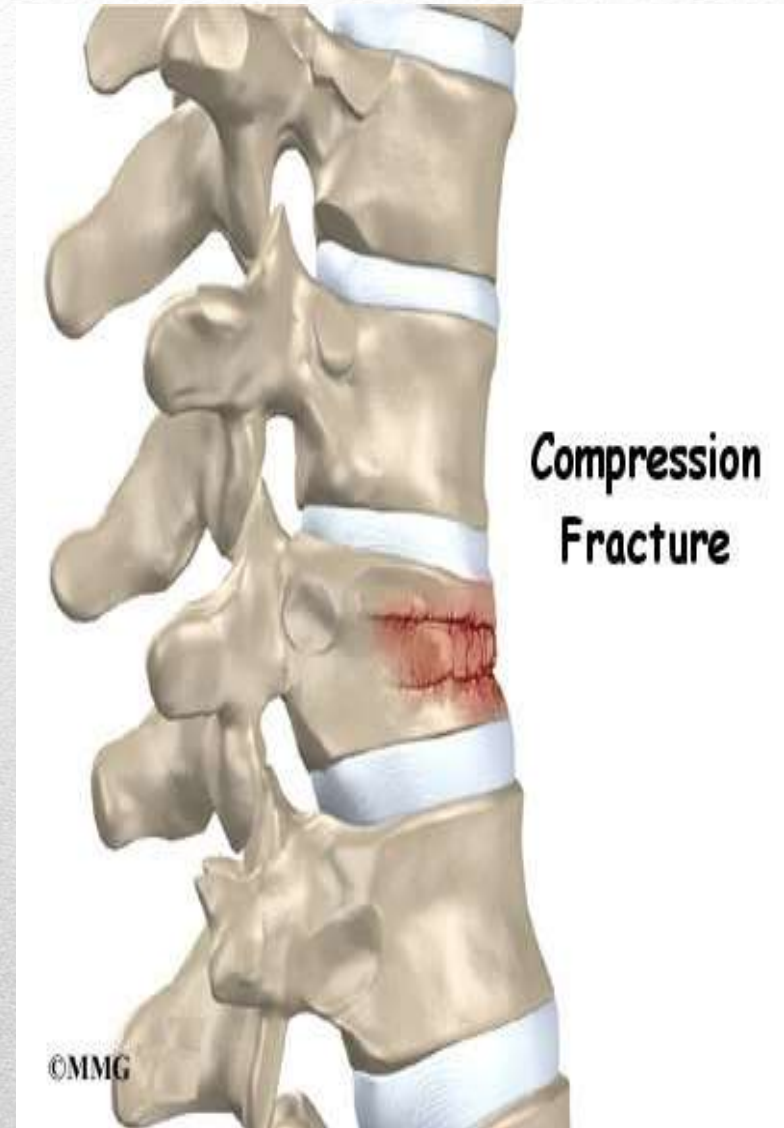
## ***Impacted fracture***



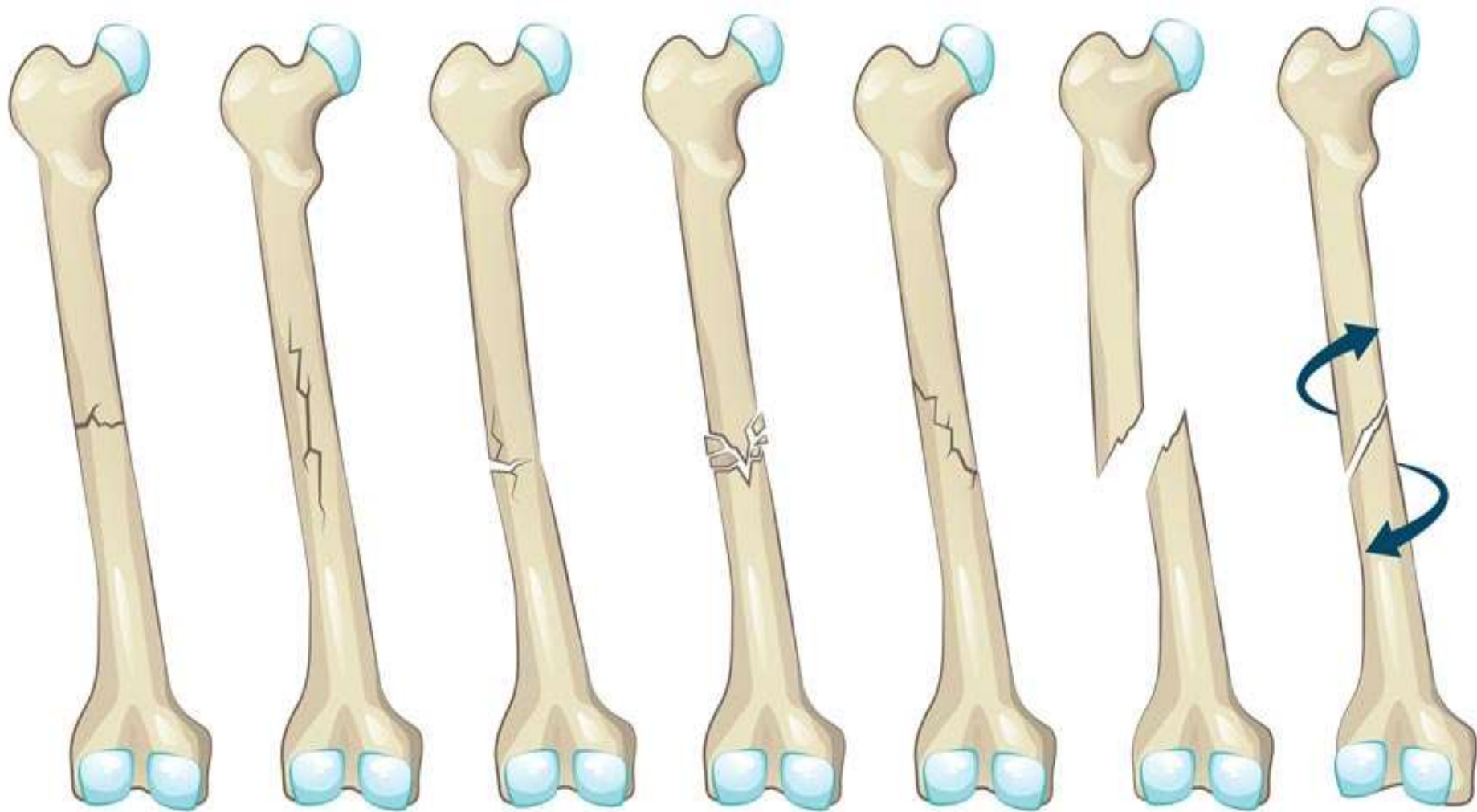
- Depressed :
- is a break in a cranial bone (or "crushed" portion of skull) with depression of the bone in toward the brain.



- Compressed Fracture
- **Compression fractures** are small breaks or cracks in the vertebrae



# BONE FRACTURES



**Transverse**

**Linear**

**Greenstick**

**Comminuted**

**Oblique  
Nondisplaced**

**Oblique  
Displaced**

**Spiral**

- Fall from a height.
- Trauma.
- Motor vehicle accidents
- Vitamin D Deficiency
- Oldage

# Causes of Fracture

---

- 1. A closed extremity injury: Is one in which the skin is not broken
- 2. A open extremity: Injury is one in which the skin has been broken.

**By injury Caused to the  
Skin**

---

- Signs & Symptoms:
- Pain & tenderness
- Deformity or angulation
- Grating & Crepitus: Sound or feeling caused by broken bones ends rubbing together.
- Swelling

# Casualty Assessment

---



- Bruising: Ecchymosis or black & blue discoloration of skin.
  - Joints locked into position
  - Nerve & blood vessels compromises
-